

# PRESERVATION NEWS

the newsletter of Historic Seattle  
*Educate. Advocate. Preserve.*

VOLUME 31  
ISSUE 1  
MAY  
2005

## South Park's Querio House is Saved

In March, web surfers who visited the Historic Seattle website ([www.historicseattle.org](http://www.historicseattle.org)) may have noticed a house for sale. Though we have not decided to sideline in the residential real-estate business, the listing represents the latest effort to save the Querio house in South Park. Even though the house was designated a City Landmark, its fate is still not secure.

Historic Seattle first learned about the precarious fate of the house from its neighbors, a group of concerned South Park residents. Concerned citizens regularly turn to Historic Seattle for help. Though we don't have the resources needed to take on every cause ourselves, we often offer assistance and guidance to those willing to take on the hard work of saving a building.

The Querio house, named for its original owners, is often referred to as the "witch's hat" or the "hat house" because of its unique roofline. The house was built circa 1908 in an area predominantly populated by Italian immigrants and truck farmers who supplied produce to the newly opened Pike Place Market.

Gauging the level of community involvement in a preservation issue is one way to determine the relative importance of a building. South Park neighborhood is a force to be reckoned with. The group of neighbors attended one of Historic Seattle's Landmark Workshops where they learned the nuts and bolts of putting together a landmark nomination. Historic Seattle works as a mentor to nominators, offering assistance and guidance when needed. The neighbors' efforts eventually resulted in the house being officially designated to a city landmark. But the story doesn't end there.



*Late 1930s photo of Querio house*

*Puget Sound Regional Archives*

## ...or is it?



*Current view of Querio House*

*L. Neschke*

Contrary to popular belief, a landmark designation does not guarantee the fate of the building. Landmarks can be demolished for a number of reasons, particularly if the building presents an excessive economic hardship to its owner. That is just what the new owner of the Querio House attempted to prove when he applied for a Certificate of Approval to demolish. The community and members of Historic Seattle were out in force at the Landmarks Board meeting where the decision was made to deny the demolition.

The advertisement on our website is an example of how we are working with the owner to find a buyer who is sympathetic to preservation, thus securing the house's future.

### IN THIS ISSUE

New Staff and Council Members Introduced  
pg 2

Advocacy Explained  
pg 3

San Francisco Bay Out-of-Town Tour  
pg 4

Upcoming Tea & Tours  
pg 6

Fund Development Highlights  
pg 8



Dear Members and Friends,

I'd like to take a few moments to introduce to you some of the dedicated people who have just joined our organization as staff and council members.

After months of searching nationwide, Historic Seattle has a new Preservation Advocate, Christine Palmer. She will pick up where Heather MacIntosh left off when she relocated to Washington, D.C. to become Executive Director of Preservation Action.

Christine earned a master's degree in Public Historical Studies at UC Santa Barbara in 1990 after fifteen years of volunteer and academic experience in the field of historic preservation. Her book, published in 1991, *New Deal Adobe: The Civilian Conservation Corps and the Reconstruction of Mission La Purisima, 1934-1942*, is a compilation of documentary research and oral histories collected from veterans of the 1930s CCC who reconstructed Mission La Purisima in Santa Barbara County, California.

She has been employed by the federal government to evaluate U.S. Forest Service Depression Era structures for National Register of Historic Places status. She has also worked as the historian for a cultural resources management firm in Virginia City, Nevada where her architectural and social history research was selected for publication in the *Nevada Historical Society Quarterly*. In addition, Christine received an appointment from the Reno, Nevada City Council to their Historic Resources Commission.

Christine has also been employed as staff for the Landmarks and Urban Conservation Commission for the City of Albuquerque, New Mexico. In 1995, she began working for the King County Historic Preservation Program in Seattle to survey historic structures in suburban and rural communities. In 1997 she returned to Santa Barbara for employment as the City Historian where she staffed the City Historic Landmarks Commission and the Architectural Board of Review.

In February, 2002 Christine launched Palmer Historical Consulting to advise Santa Barbara property owners, developers, and government decision makers on the protection of historic sites. She also worked part-time as the Historic House Museums Coordinator for the Santa Barbara Historical Society providing docent-led tours of the 1862 Fernald Mansion and the 1854 Trussell-Winchester Adobe.

Her pro bono activities include numerous historic walking tours provided as fundraisers for Santa Barbara non-profit organizations. In 2004 she began teaching an adult education class on neighborhood history and architecture for Santa Barbara City College.

We are delighted to once again have a full-time staff person with the passion and experience to focus attention on safeguarding our built legacy.



*Our new Preservation Advocate, Christine Palmer*

We also are privileged to have two outstanding new Council members.

Mayoral appointee Marie Wong is the Director of the Bachelor of Public Affairs program in the Institute of Public Service at Seattle University. An assistant professor with a Ph.D. from the Urban Design and Planning Department at the University of Washington, she teaches a broad range of courses on cities, housing design, sustainability, and the Asian-American experience. In addition to her current teaching experience at Seattle University and previous appointments at the University of Washington, Ms. Wong has also worked in the fields of transportation planning and preservation planning.

Constituency appointee Sharon Coleman has twenty-five years of development, design and project management and construction management experience. Since 2002, she has been real estate development manager for Vulcan, Inc. Prior to that, she served as project manager for Wright Runstad & Company on the adaptive reuse of the historic U.S. Marine Hospital for the headquarters of Amazon. Sharon also was project manager for the first phase of the development of the University of Washington Tacoma campus, during which she oversaw restoration and adaptive reuse of six historic buildings.

We look forward to working with Marie and Sharon as the Council begins to shape a new strategic plan that will build on 30 years of exceptional service to our community.

—John Chaney, Executive Director  
jchaney@historicseattle.org

# Advocacy—it doesn't Happen without Advocates

Once each month, for about an hour, the Advocacy Committee meets to vet, strategize, and kibbitz about endangered structures and ways to save them. The meetings can be frustrating, even maddening, sometimes nostalgic, but are often hopeful and always full of good company. Here is an overview of the committee and how you can get involved.

To make it on the committee's agenda, a building is usually threatened with demolition. The committee then runs the issue through a matrix of protocols to determine if it meets the criteria required to devote scarce organizational resources, and then devises a plan of action.

The potential demolition of First United Methodist Church- the last great old church in downtown- and the Querio or "witch's hat" house in South Park are issues that emerged from the Advocacy Committee. Both buildings remain in precarious situations and Historic Seattle has taken two different routes to save the buildings. You can read more about Historic Seattle's work to save the church and the Querio house in related articles in this newsletter.

The committee is carefully watching the activity at Fort Lawton and the effects that the government's privatization plan would have on the few remaining historic buildings in Discovery Park. We also keep our eye on projects going before the City's Landmarks Preservation Board and give testimony and support when needed.

Our work is often symbiotic with the work of the Landmarks Preservation Board. We offer a landmarks workshop twice each year to show people how they can help save a favorite treasure (the next workshop is November 5). This is an effective and pro-active way to "do preservation".

Other pro-active efforts include input for the Mayor's Center City Initiative and related density and height limits downtown. The higher people are allowed to build, the more incentive there is to demolish older buildings and make way for newer taller ones. We are not opposed to more density downtown; we just don't want to lose the character of the city in the process.

Though Advocacy Committee meetings are mostly task

and results oriented, broad questions are pondered. Is it better to work on saving individual buildings or to promote a city-wide preservation ethic? How do you make that balance? How can we be pro-active in saving buildings rather than re-active each time a building becomes threatened? Why is architectural preservation important? What makes a livable city?

If you are interested in these questions or interested in helping save some of the character of Seattle, the Advocacy Committee meets on the second Wednesday of each month, 12 noon at the Dearborn House.

## First United Methodist Church Still Standing

Historic Seattle, the Washington Trust for Historic Preservation, the National Trust for Historic Preservation, and the Friends of First United Methodist Church continue to join forces to fight to save the most important historic church downtown.

Historic Seattle and the others opposing demolition believe that the church has not adequately looked at viable alternatives to demolition. To assist the church in identifying such alternatives, Historic Seattle hosted a design charrette with many of Seattle's top developers, architects and designers. The group produced a number of alternatives that would both provide a financial benefit to the church and save the building. To date, the church has chosen to disregard these options, as well as buy out offers and land swaps proposed by members of the community.

Church leadership has refused repeated attempts over the last several years to enter into a dialog to find mutually beneficial solutions. Hiding under the generous protections of religion afforded by our state's constitution, the church is defending its plans to demolish the historic church and replace it with another skyscraper. Currently, Historic Seattle and our partner organizations have joined forces in a legal appeal to halt these plans.

The design charrette report is available at [www.historicseattle.org](http://www.historicseattle.org)

---

Is it better to work on saving individual buildings or to promote a city-wide preservation ethic? How do you make that balance? How can we be pro-active in saving buildings rather than re-active each time a building becomes threatened? Why is architectural preservation important? What makes a livable city?

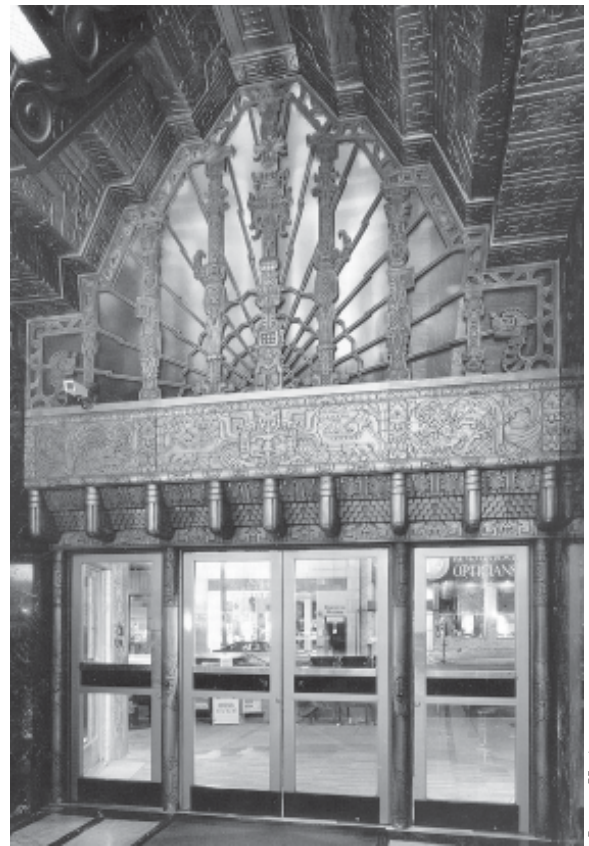
---

# San Francisco Bay: Architecture, Design & Preservation

Historic Seattle invites you to join us in the Spring of 2006 on a discovery of architecturally rich and diverse San Francisco, Oakland, and Berkeley—cities with a long and vital history and architectural heritage. The Bay area has done a great deal to preserve and protect its finest buildings and reuse them successfully. This five-day tour will explore ornate wooden Victorian homes, Arts and Crafts buildings by Greene and Greene and Bernard Maybeck, grand early twentieth century commercial and civic buildings, and extraordinary Art Deco movie palaces. As we have done on previous tours, our intent is to avoid the ordinary tourist destinations and show off some of the best kept secrets of these cities, including interiors of private homes and rarely opened institutions. Our guides and on-site presenters are experts in the fields of architecture and design. Don't expect lots of free time. Our tours are packed with visual delights at every turn, wonderful meals in historically and architecturally interesting spaces, and a variety of walking and driving experiences.

The highlight of the trip—and one of the reasons for its timing—is a major exhibit organized by London's Victoria and Albert Museum and being presented by the De Young Museum: *International Arts & Crafts*. While similar to the outstanding exhibition developed by the Los Angeles County Museum of Art in 2005, the V&A exhibition adds Japan to the mix. It includes nearly 300 exquisite works of furniture, decorative and applied arts from Great Britain, Scandinavia, Germany, Austria, Hungary, Belgium, the United States, and Japan.

The program includes five days/four nights accommodations at a comfortable historic hotel, some meals, all tours and excursions, museum and house admission fees, and all bus transportation on tour. Participants are responsible for booking and paying for their air or rail transportation to or from San Francisco



450 Sutter Medical Building, Timothy Pflueger, 1928

Larry Kreisman

and getting to and from the hotel. The cost of this program is expected to be in the range of \$1,350 to \$1,450 per person, double occupancy. This includes a tax-deductible contribution of \$100 to Historic Seattle Preservation Foundation. Spaces are limited. Last year's Los Angeles program was sold out. A program brochure will be sent to members in September with specific dates, sites, hotel, and cost. If you are interested in reserving space (no obligation, just contact information) please call Historic Seattle (206) 622-6952.

## Lewis & Clark Lecture Series at MOHAI

Presented in conjunction with *Rivers, Edens, Empires: Lewis & Clark and the Revealing of America*, a new exhibit from the Library of Congress at MOHAI through June 12, 2005. Call (206) 324-1126 or visit [www.seattlehistory.org](http://www.seattlehistory.org) for more information. *Interpreting Lewis & Clark Through Art*, May 12, 7 pm; *Lewis & Clark with the Nez Perce: Heroes or Villains?*, May 19, 7 pm; *Lewis & Clark: Before and After*, May 26, 7 pm; *Lewis & Clark as Enlightenment Protagonists in the Far West*, June 9, 7 pm.

### Meetings of Interest

**Historic Seattle Council meetings**  
Third Thursday at 8 am at the Dearborn House  
1117 Minor Avenue  
(206) 622-6952

**Historic Seattle Advocacy Committee meetings**  
Second Wednesday at 12 pm at the Dearborn House  
1117 Minor Avenue  
(206) 622-6952

**Seattle Landmarks Preservation Board**  
First and third Wednesdays at 3:30 pm  
Rm. 1003, Arctic Club,  
700 Third Avenue  
(206) 684-0228

**King County Landmarks Commission**  
Fourth Thursday of the month at 4:30 pm  
Room 3210, Bank of America Tower, 701 5th Avenue, Seattle, unless otherwise announced.  
Contact: King County Historic Preservation Program, Office of Business Relations and Economic Development  
(206) 296-8689

## Ongoing Historic Home Tours

**When:** Second Tuesday of each month, 1 pm

**Where:** Meet at the Dearborn House, 1117 Minor Ave.

**Tickets:** \$8 members of Historic Seattle or Washington Trust; \$10 general public

Throughout the year, Historic Seattle and the Washington Trust for Historic Preservation offer guided tours of our historic properties, Dearborn House (1907) and the Stimson-Green Mansion (1899-1901). Located across the street from one another on First Hill, these properties are two of only four remaining single-family residences left in the neighborhood.

The Dearborn House was built for Henry H. Dearborn by architect Henry Dozier, who created an American foursquare-style home with Classic embellishments. Unique details of note include upward turned metal roof eaves and stucco exteriors.

The Stimson-Green Mansion was built in the Grand Tudor-style for C.D. Stimson, one of Seattle's early industrialists. The property was sold in 1913 and resold in 1914 to Joshua Green. The original architect/builder was Kirtland K. Cutter of the firm Cutter and Malmgren of Spokane.

Group tours may also be arranged. Contact Larry Kreisman, program director at (206) 622-5444 x 224 or e-mail [larryk@historicseattle.org](mailto:larryk@historicseattle.org).

## Seattle Architectural Foundation Viewpoints Tour Season

The Seattle Architectural Foundation announces a new series of *Discover Downtown Tours* and *Explore Neighborhood Tours* offered from May through October that are sure to be educational and entertaining. Check out their new website for full information at [www.seattlearchitecture.org](http://www.seattlearchitecture.org). To request a brochure and register for tours, call (206) 667-9184.

## Be Surprised by Everett

**When:** Saturday, June 4, 8 am-6 pm

**Tickets:** \$125\*\*



Larry Kreisman

*Snohomish County Courthouse, Everett*

If you've not been there before—and even if you have—you will be surprised by Everett, when you visit it with Historic Seattle. Its spectacular waterside and active harbor, railroad connections, and heavy industry stimulated distinctive commercial and civic buildings in its downtown and beautiful residential districts that took advantage of expansive views of water and mountains.

Members of Historic Everett, a local preservation group, share their passion for the architectural treasures of the city. Our one-day tour includes: a slide presentation by David Dilgard, long-time historian in the Northwest Room of the Everett Public Library (one of Seattle architect Carl Gould's most remarkable design achievements); a downtown walking tour; lunch in the grand ballroom of the Monte Cristo Hotel with a presentation by Michael Wishkoski, GGLO on the restoration and adaptive reuse; and an afternoon driving tour of the major residential areas, with some interiors. Call for a brochure.

The tour includes extended walking, some hills, and climbing stairs in several buildings without accommodation for people with disabilities. Tour goers are expected to get on and off a bus numerous times during the afternoon. All tour members are expected to be in active good health and enjoy traveling as part of a group.

Refund policy: There are no refunds for cancellations after May 1 unless your space(s) can be filled with another participant.

*\*\*Ticket price includes bus transportation to and from Seattle, lunch, and guided walking and bus tours of significant downtown buildings and residential districts (some interiors). \$25 is a tax-deductible contribution to Historic Seattle Preservation Foundation.*

### Events of Interest

**West Seattle Home Tour**  
Southwest Seattle Historical Society's 2005 *Homes with History Tour* will be held on Saturday, May 21, 10am-4pm. Advance tickets: \$15; day-of-tour tickets: \$20. (206) 938-5293; [loghousemuseum@comcast.net](mailto:loghousemuseum@comcast.net)

**National Trust Annual Meeting Sustain America: Vision, Economics, and Preservation**  
September 27-October 2, Portland, Oregon. For registration information visit [www.nthpconference.org](http://www.nthpconference.org)

**Marion Dean Ross Pacific Northwest Chapter Society of Architectural Historians Annual Meeting Sustainability: History, Culture, Environment**  
October 7-9, Bellingham, Washington. For information visit [www.sahmdr.org](http://www.sahmdr.org)

# Spring Tea & Tour: A Bit of Massachusetts on Queen Anne Hill

**When:** Sunday, May 15, 1-4 pm  
**Where:** Address and directions sent prior to tour  
**Tickets:** \$20 Historic Seattle members and guests of members



Larry Kreisman

Our spring tour is at the F. H. Osgood residence, which has a rich and exciting past. Historians report Sinclair Lewis wrote his first novel while living in the house. British sym-

phony conductor Sir Thomas Beecham was a frequent overnight guest during his tenure in Seattle in the 1940s. Astronaut John Glenn and Buckminster Fuller both stayed in the brick residence while visiting Seattle on lecture tours.

Constructed in 1903, its architect, R. Clipson Sturgis of Boston, modeled the residence after the historic Hyslop House in Brookline, Massachusetts, at the request of New England native Mrs. Osgood. The July 1919 edition of *The House Beautiful* magazine included an article on the Osgood house that stated, “the real beauty of the house is in the dignified proportion of the rooms which are capable of being preserved or quite ruined by what is put in them. It is the taste of the owner that makes this house beautiful within.”

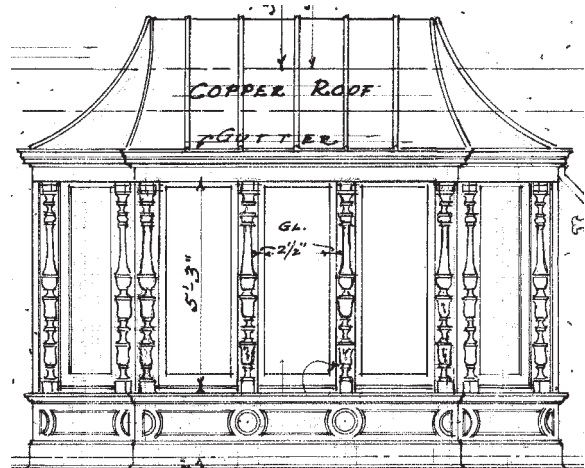
The beautiful formal gardens were originally designed by the Olmsted brothers. The current owners have involved leading interior designers, muralists, and landscape architects to restore the house and garden and make it a beautiful and comfortable place for living and entertaining.

# Summer Tea & Tour Franklin & Eleanor Roosevelt Slept Here

**When:** Sunday, July 31, 1-4 pm  
**Where:** Address and directions sent prior to tour  
**Tickets:** \$20 Historic Seattle members and guests of members

The Roy Corbett residence, designed by the Seattle firm of Schack Young & Myers in 1925, reflects interest in the Mediterranean and Spanish revival styles popularized in California and firmly rooted in Northwest residential design by the 1920s. Despite the fact that the damp Northwest was not an ideal climate in which to build with stucco, large “movie mansions” like this residence and smaller Mission cottages and bungalow courts found their places in high and low income neighborhoods.

Its most famous owners were John and Anna Roosevelt Boettiger, who lived in this home from May 1938 to May 1941. John was the publisher of the Seattle Post-Intelligencer and Anna was a journalist and editor there. It is no exaggeration to say, “Franklin and Eleanor Roosevelt



Special Collections Division UW Libraries

Detail of front elevation

slept here,” as they made several visits during his presidency. Some of the secret service records pertaining to “Security of the Grandchildren of the President of the United States” and a Secret service letter about the security of Eleanor Roosevelt when she visited her daughter and newborn grandson, John Roosevelt Boettiger, will be on display. The home has recently been refurbished by new owners and displays a fine collection of Northwest regional artists.

## Fall Tea & Tour For Passholders Only

Tea & Tour, a popular offering of Historic Seattle, is a benefit limited to members and their guests. We are privileged to explore historic private residences and gardens that are rarely or never open to public view. In addition to our spring and summer tours described on the opposite page, Preservation and Tea & Tour pass-holders will be guests at a very special third private property in late fall as a privilege of pass purchase. Tickets will not be sold individually for this event. In past years, these special opportunities have included Frank Lloyd Wright-designed homes in the Puget Sound area and the pyramidal top of the Smith Tower, so don't miss this opportunity. See back page to register for a Tea & Tour pass.



Wayne Dodge

LA tour participants on the steps of the Doheny Mansion

## Los Angeles Tour a Big Success

Despite the ambitious itinerary, last January's 5-day tour to Los Angeles was an overwhelming success. Our days were full of wonderful architecture and interiors, articulate and enthusiastic presenters and guides, great food, unique accommodations, and an outstanding exhibit on the Arts and Crafts Movement with an excellent presentation by Wendy Kaplan, the curator. The evaluations were outstanding. Participants particularly commented on the knowledge and passion of the guides and the attention they felt they received that differed markedly from tours they had taken with other organizations.

Historic Seattle is planning an equally exciting tour to San Francisco in the spring of 2006 and it isn't too early for you to let us know of your interest, see page 4.

## Summer Learning from Historic Sites & Members Meeting Mt. Baker Park Presbyterian Church

**When: Monday, July 18,  
6:30-8 pm**

**Where: 3201 Hunter  
Boulevard South**

**Tickets: Free/donation**

This fine Romanesque Revival-style church, designed 1922-23 and completed the

following year, was executed in brick with

glazed terra cotta trim and was one of the earliest church designs by the firm of Albertson, Richardson and Wilson; Saint Joseph's Church of 1929-30 is one of their best known works. The Romanesque style terra cotta trim resembles in color and ornament that

used by the firm in the Cornish College of the Arts building on Roy Street, north Capitol Hill, built in 1921. Damage from the Nisqually Earthquake led to a commitment by the congregation to do repairs and restoration, as well as to apply for City of Seattle landmark designation (completed by Historic Seattle), which it received in spring 2004. Come see the church and hear about the congregation's great stewardship. Plan to stay in the neighborhood afterwards. With daylight until 9:30 or 10 pm, it's a great time of year to stroll along Hunter Boulevard and Cascadia Avenue South to enjoy the trees, the houses, and the views.



Front entrance of Mt. Baker Park Presbyterian

Larry Kreisman

---

To contact  
Barbara Flynn,  
Director of Fund  
Development,  
call (206) 622-  
5444, ext. 225  
or e-mail her at  
barbara@historic  
seattle.org

---

## Gearing Up for 2005 Online Auction

With a successful first-ever online auction under our belts, we are preparing for another virtual event in 2005. Scheduled for September, this year's auction will be bigger and better, with many new items available for bid. We need your help with procurement, publicity and corporate sponsorships. If you have an item(s) to donate, are interested in helping with procurement, or have ideas about companies that might be interested in sponsoring the event, please contact Barbara Flynn.

## New Foundation Officers Elected

We are pleased to announce this year's officers for the Historic Seattle Preservation Foundation: Marie Strong - President; Pamela Zytnicki - Vice-president; Michael Herschensohn - Treasurer; and John Chaney - Secretary. Thank you all for your leadership.

## HS Foundation Wants You!

The Historic Seattle Foundation is looking for other committed preservationists to join the Board. While the Historic Seattle PDA Council makes policy decisions and oversees the financial health of the organization, the Foundation Board helps identify prospective members and donors to sustain our programs. If you are passionate about preservation and want to get more involved, contact Barbara Flynn.

## Ad Space Available

Advertising space is available in our newsletter, *Preservation News*, at very reasonable rates — \$75 for a small ad (3.5" x 2") and \$150 for a large ad (3.5" x 4"). Your ad will reach 1,145 Historic Seattle members and other preservation enthusiasts. For more information, contact Barbara Flynn.

## Spring Appeal is on the Way

Keep your eyes on your mailbox – our Annual Appeal will be coming to you shortly. With this twice-yearly campaign, once in the spring and once in the fall, we ask you to consider making a tax-deductible contribution to Historic Seattle.

While membership dues bring in about \$45,000 a year, we simply cannot sustain our advocacy, education and preservation programs without *significant* additional resources. If you can support Historic Seattle in only one way, we encourage you to maintain your membership. However, if you are able, we hope you will also consider making a generous donation when you receive your appeals. Thank you!

## Anchors Away

We had a heck of a good time at last year's Milk Carton Derby and invite you to join our crew for the 2005 event. Our 2004 entry was a floating replica of the Twin Teepees, a real crowd pleaser that won two-second place prizes. Our able paddlers are confident that with minor adjustments, we could easily take a first place this July!

If you'd like to help design, build or propel our craft in the 2005 Derby and have a bunch of fun in the process, please contact, Barbara Flynn.

**Anniversary T-Shirts Available!**

Help celebrate Historic Seattle's 30th Anniversary with one of these great cotton t-shirts. With our logo on the front and a montage of our preservation successes on the back, it's sure to be one of your favorites - not to mention a terrific conversation piece! Available in adult: Small, Medium, Large and X-large. **A bargain at just \$10.**  
**To order by credit card, call (206) 622-6952.**

## Thank You to All Our Members and Contributors

### WELCOME TO OUR NEW MEMBERS 11/04—3/05

Angela Argentati  
Mindy Lou Baker  
Janice Bernstein  
Joy A. Bidwell  
F.H. Braymer  
Denise Campbell  
Sharon Coleman  
Bruce M. Cross  
Jim & Sue Dailey  
Roberta De Vore  
William Doyle  
Janet Dunlop  
Kathleen Durham  
David & Pamela Eikrem  
Virginia Lee Ellis  
Izumi & Woods Fairbanks  
Petra Franklin &  
David Lahaie  
Amy Gerson  
Nancy Gleason  
Richard Hoon  
Roger Kirk  
Steve Kupritz  
Liz & Eric Leaf  
Flo Lenz  
Howard C. Logan  
Bob Margulis  
Lisa McNelis, AIA  
Carol McQuarrie  
Ahsha Miranda  
Terry Morton  
Jennifer Naimy  
Joanne O'Connor  
Ali & Nico Pallerioni  
Peter Philips  
Chris Plyman  
Robert & Karen Quick  
William J. Rathbun  
Gretchen Schmidt  
Joy Smith  
Jared Strote  
Tino Umali  
Carol Vincent  
Eleanor Wallace  
Donna Waterfield  
Gary Wise

### WELCOME TO OUR NEW CORPORATE MEMBERS 11/04—3/05

Johnson Braund Design  
Group  
Key Bank  
L. C. Jergens  
S.G. Taylor Construction  
Sider + Byers

### ANNUAL FUND DONORS NOVEMBER 2004 APPEAL

**\$500+**  
Stickney Murphy Romine Architects  
Nitze Stagen & Co.

**\$250 - \$499**  
Alan & Sarah Black  
James Fearn  
Kristine & Doug Forbes

**\$100 - \$249**  
Sara-Jane Bellanca  
Cathy & Michael Casteel  
Janet E. Clow  
Cloantha Copass & Doug Fleming  
Peggy Corley  
Shirley Courtois  
Henry W. & Mona C. Dearborn  
Marilyn Dillard  
Bill & Lindy Gaylord  
Mary Jo & William Harbold  
Anne Gould Hauberg  
Susan & Frederick Ingham  
Dan & Emily Kozie  
Larry Kreisman & Wayne Dodge  
Gretchen Luxenberg  
Gretchen D. & Lee E. Monteith  
Elizabeth & Lee Pearl  
Gloria A. Remy  
David Rush & Tamis Nordling  
Norman Tjaden  
Bob Vernon & Marjorie Bianco  
Weitzel Construction Inc.  
Patty & Howard Whisler  
Kay Wilson

## In the Pink

When you receive your membership renewal this year, you have the opportunity to honor Historic Seattle's 30<sup>th</sup> Anniversary with an additional donation of \$30. Look for the pink highlighting on your renewal envelope. It's a quick and easy way to express your commitment to preservation and to help sustain our programs.



### Up to \$100

Dick Arnold & LoraLee Salisbury  
Helen Baker St. John & Stacy St. John  
Susan Barnes  
Richard Brown  
Ashley Clark  
Jenny F. Cummins  
Irene Duncan  
Rod & Sharon Edwards  
Alvin & Ruth Eller  
L.A. & Sherry J. Elliott  
Cathy Galbraith  
Jerry & Viola Herkes  
Michael & Julia Herschensohn  
Yolanda Houze  
Jackie Kelly  
Albert D. & Ingegerd A. Linden  
Howard C. Logan  
Louise J. McNerney & Jan Sobieralski  
Barry & Nancy Mickel  
Kimberly Miller  
Peter & Jaymie Mills  
Leanne Olson & Jim Bailey  
Steve Paoli  
Tom & Jackie Pendergrass  
Margery Phillips  
Jason Poll  
Anne Rutledge  
Jeannie Sargent  
Constance Schnell  
Dean S. Scotton  
Paul Siebenrock  
Heather Trim

## Two Grants Support Arts & Crafts Research



John Kelly

*A model bungalow built by Craftsman Bungalow Company, Seattle, for the 1912 Pottlatch parade.*

The Arts and Crafts Research Fund Council, established in 2004 to encourage original research into the Arts and Crafts movement, presented two awards in December to Historic Seattle members.

Daniel Lees received a \$2,000 grant for documenting the heritage of decorated and modeled leather—circa 1900 to 1930—in the U.S. He is asking for help in his search for premier examples of manufactured artistic leather goods. Of special interest are the fragile ephemera: photos of artisans at work; advertisements of leather goods and company literature. If you have any items or photos, personal family journals or memoirs, or newspaper stories about artistic leather, please contact Daniel Lees at: dlees9@comcast.net; (425) 821-5321; 12634 Juanita Drive NE, Kirkland, WA 98034.

Larry Kreisman received a \$3,000 grant for *The Arts & Crafts Movement in the Pacific Northwest*, a book co-authored with Glenn Mason examining the role that Washington and Oregon played in the distribution of national companies and the artistic achievements that occurred regionally. There will be sections on regional architecture, furniture and furnishings, metalwork, stained glass, ceramics and textile crafts, printing, and photography, societies, schools, businesses and individual craftspeople. If you have information, objects, books or ephemera that could be valuable to this project, he would like to hear from you. This project is also supported by a Heritage Fund Special Projects grant from 4Culture/CDA King County Lodging Tax Fund. Contact Larry Kreisman, Program Director, Historic Seattle, 1117 Minor Avenue, Seattle WA 98101; (206) 622-6952 x 224; larryk@historicseattle.org

## Stencil Workshop Added to Bungalow Fair

When: Monday, September 26, 8:30 am-12 pm  
Where: Good Shepherd Center, 4649 Sunnyside Avenue N., Room 202  
Tickets: \$75 or \$140; see options below



Historic Seattle is pleased to announce an additional offering as part of our Bungalow Fair. Karen Timken of Craftsman Interiors presents a workshop, *Stenciling on Walls and Fabric*. Her Monday morning workshop is the perfect complement to our Friday all-day Embroidery workshop with Ann Chaves. The class will include

- § Overview of Arts and Crafts period stencil design principles
- § Stenciling supply selection
- § Demonstration of basic and intermediate stenciling techniques for walls and fabric
- § Hands-on practice stenciling walls and fabric
- § Individual attention/guided instruction for participants as they practice stenciling
- § Stenciled linen pillow top to take home

*Note:* Although stenciling is not terribly messy, wear appropriate clothes and/or bring an apron.

*Fees: Option 1:* \$75 includes fabric for pillow top and use of equipment and supplies in class.

*Option 2:* \$140 includes Complete Stencil Kit to take home — your choice of wall stencil, 4 standard paints, 4 stencil brushes, brush cleaner and spray adhesive (\$85 if purchased separately), fabric for pillow top and use of equipment and supplies in class (\$20 savings). Space is limited to 20 so please register earlier to assure a spot.



## Looking Ahead Cadillac Hotel Completion

Historic Seattle's rehabilitation of the Cadillac Hotel building is on track, with the shell and core scheduled for completion by the end of May. The exterior brick walls and windows have been restored and look terrific. With the cover off and scaffold removed, the Cadillac is once again a welcome presence in Pioneer Square.

The challenge of coordinating the build-out of improvements for the Klondike Gold Rush National Historical Park and office tenants has begun. We hope to finish and open with a big celebration in late August. Watch for your invitation.



Peri Muhich

Current view of Cadillac Hotel

## Future Communications

Historic Seattle has changed its communications to its members. We produce a yearly program brochure in late December and two newsletters in May and September. We also keep members informed with periodic post cards, e-mails, and notices. Upcoming communications will be:

- § Post card announcing the On-Line Auction
- § Post card announcing the Bungalow Fair
- § Fall newsletter with information about the Bungalow Fair, the fall members meeting at Northwest School, and the final "surprise" Tea and Tour of the year.

## Volunteer Profile: Pete Mills

Pete Mills, Historic Seattle council member since 2003, was introduced to the organization several years ago when he and his wife, Jaymie, attended one of our *Preserve Your Old House* lectures. At that time, they had just begun working on their 1927 bungalow in Ballard. Pete says by attending that lecture he became more aware of the proper way to go about the work without jeopardizing the historic integrity of the house.

Pete grew up in Poulsbo, WA, the youngest of five children. He has worked as a wilderness ranger, summer camp director, juvenile counselor, and fundraiser. His fundraising experience came in handy during the fall of 2004 when Pete co-chaired Historic Seattle's first annual On-line Auction, which raised over \$12,000.

Pete can often be seen at Historic Seattle events encouraging those who are not members to join the organization and support architectural preservation.



Peri Muhich

Pete Mills & Bennie

## PRESERVATION NEWS

*is a publication of Historic Seattle*

Historic Seattle Administrative Staff:

Executive Director: John Chaney

Director of Fund Development: Barbara Flynn

Director of Real Estate Development: Mark Blatter

Program Director: Larry Kreisman

Preservation Advocate: Christine Palmer

Operations Administrator & Volunteer Manager: Peri Muhich

Property Manager: Russ Meltzer

Facility Operations Manager: Mark Willson

Administrative Assistant/Fund Development & Operations: Becky Davis

Administrative Assistant/Accounting: Kay Wilson

Administrative Assistant/Council & Good Shepherd Center: Cindy Hughes



TEL: 206-622-6952 FAX: 206-622-1197

E-MAIL: [info@historicseattle.org](mailto:info@historicseattle.org)

WEB: [www.historicseattle.org](http://www.historicseattle.org)

# Historic Seattle: Dedicated to Architectural Preservation

## Program & Membership Registration

## Council of the Historic Seattle Preservation and Development Authority

Andrea Divoky, Chair  
 Dennis Andersen  
 Steve Arai  
 Sharon Coleman  
 Kevin Daniels  
 Jim Diers  
 Michael Herschensohn  
 Larry Johnson  
 Mary McCumber  
 Pete Mills  
 Rick Sever  
 Marie Wong

## Board of Directors of the Historic Seattle Preservation Foundation

Marie Strong, President  
 Steve Arai  
 Andrea Divoky  
 John Chaney  
 James Fearn  
 Gary Gaffner  
 Pamela Zytnicki

### Membership Categories

- New Member
- Renewing Member
- Student \$25
- Individual \$40
- Family \$65
- Contributing \$100
- Corporate
  - (1-24 employees) \$250
  - (25+ employees) \$500

Visit [www.historicseattle.org](http://www.historicseattle.org) for additional information on these events

### Upcoming Event Listings

	NUMBER	TOTAL
Historic Home Tours <input type="checkbox"/> 5/10 <input type="checkbox"/> 6/14 <input type="checkbox"/> 7/12 <input type="checkbox"/> 8/9 Member: \$8; Public: \$10	_____	\$ _____
Tea & Tour Pass (members only) Member: \$50; Public: \$NA	_____	\$ _____
Osgood Residence Tea & Tour 5/15 Member: \$20; Public: \$NA	_____	\$ _____
Historic Everett Tour 7/4 Member: \$125; Public: \$125	_____	\$ _____
Members Meeting: Mt. Baker Park Presbyterian Church 7/18 Free/donation	_____	free/donation
Corbett Residence Tea & Tour 7/31 Member: \$20; Public: \$NA	_____	\$ _____
Bungalow Fair Pass Member: \$25 Public: \$35	_____	\$ _____
Embroidery Workshop (9/23) Member & Public: \$120	_____	\$ _____
Stencil Workshop (9/26) Member & Public: \$75 or \$140	_____	\$ _____
Members Meeting: Summit/Northwest School (10/24) Free/donation	_____	free/donation
Landmark Nomination Workshop (11/5) Free/donation	_____	free/donation

I'm making an additional contribution of \$ \_\_\_\_\_

Contact me about volunteer opportunities

Contact me about planned giving opportunities

Make checks payable to: Historic Seattle

<b>Total Amount \$</b>	<b>Payment Method</b>	<b>Name</b>
_____	_____	_____
<b>Account Number</b>	<b>Street</b>	
_____	_____	
<b>Expiration Date (MM/YY)</b>	<b>City, State, Zip</b>	
_____	_____	
<b>Name on card</b>	<b>Daytime phone ( )</b>	
_____	_____	
<b>Signature (if charging)</b>	<b>E-mail</b>	
_____	_____	

Please detach and mail to: **Historic Seattle, 1117 Minor Avenue, Seattle, WA 98101.** If paying by credit card, you may fax this page to: (206) 622-1197 or you may phone in your membership and registration by calling (206) 622-6952.

**Historic Seattle**  
 The Dearborn House  
 1117 Minor Avenue  
 Seattle, Washington 98101

Non-profit Org.  
 U.S. Postage  
**PAID**  
 Seattle, WA  
 Permit No. 1129

