

OFFICE SPACE FOR LEASE

UNIQUE HISTORIC PROPERTY IN PRIME LOCATION

Stimson-Green Mansion



1204 Minor Avenue, Seattle

Home of the Washington Trust for Historic Preservation

Designed by Kirtland Cutter, constructed 1901



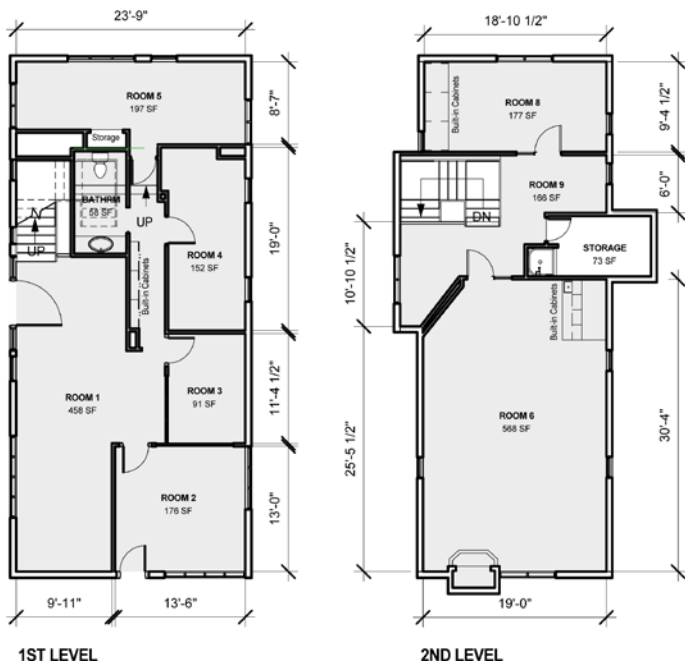
CARRIAGE HOUSE

Two story, stand alone historic property

Space Available: 2,116 sf

Amenities: Exposed brick, security system, on- and off-site parking available (for fee), preferred Stimson-Green Mansion use and rental rate

Lease type: Modified net lease



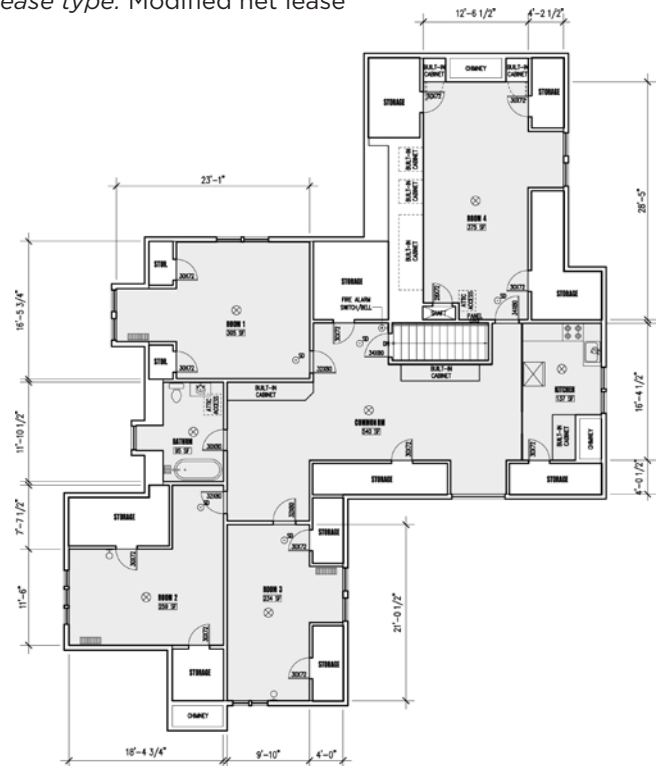
THIRD FLOOR

Nicely detailed space with built-in casework

Space Available: 2,812 sf

Amenities: On- and off-site parking available (for fee), preferred Stimson-Green Mansion use and rental rate

Lease type: Modified net lease



For more information and/or to schedule a tour please contact Kji Kelly, kjik@historicseattle.org