



Good Shepherd Center Garden History Tour

Coronavirus Edition

by Tara Macdonald



Photo Tara Macdonald



Photo Teri Thomson Randall



Photo by Teri Thomson Randall, 2015



Mary Euphrasia Pelletier

By Unknown author - Ancient prayer prayer-card of Saint Marie-Euphrasie Pelletier (from 19th century), Public Domain, <https://commons.wikimedia.org/w/index.php?curid=30083292>



· HOUSE OF THE GOOD SHEPHERD ·

BRITTING & BUCHINGER, ARCHITECTS.

Architect's rendering
- Courtesy Seattle Archdiocese



Post card



12731
Asahel Curtis

April 17, 1922
-Asahel Curtis, UW Special Collections

In most cases, the girl herself is not the “problem”, but she has a problem too big for her to solve. Too often the parents are the “delinquents” as the records show.

-Jubilate Deo, 1940



Art class with Sr. Ursula 1950s, by Hal Kaminske



Sewing class



Printing. 1957



St Euphrasia dormitory room, 1960s



Typing class, 1957



1946

-Pacific Aerial Photos, courtesy of City of Seattle Engineering Records Vault



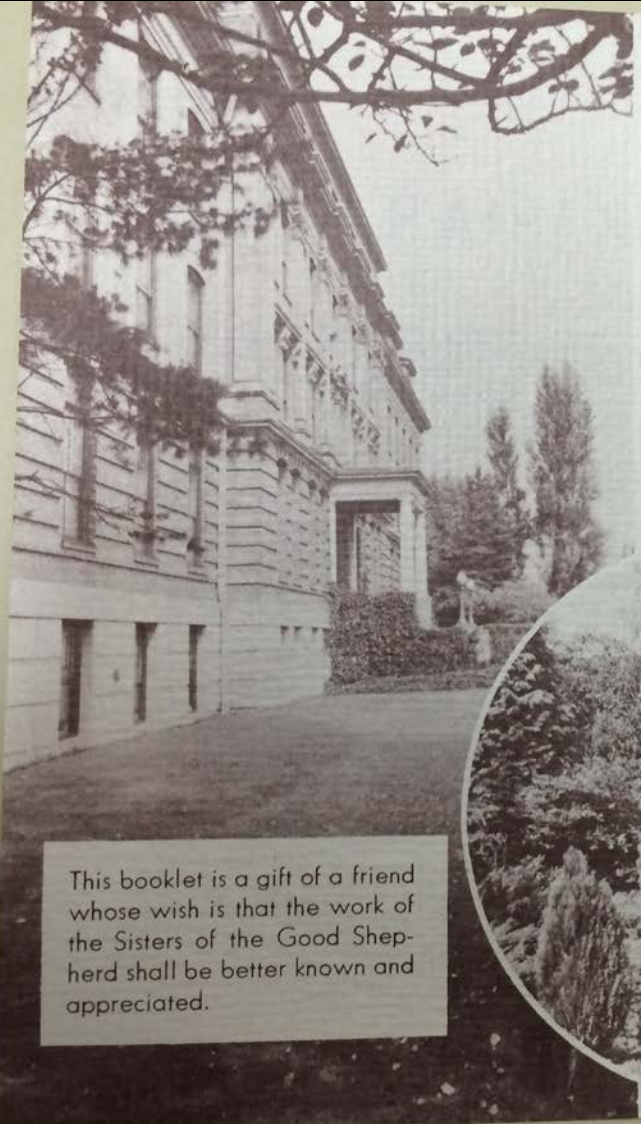
Property of Museum of History & Industry, Seattle

Home of the Good Shepherd May 13 1936
- Websters & Stevens, Property of Museum of History and Industry



1983.10.4550.2

- Websters & Stevens, Museum of History and Industry



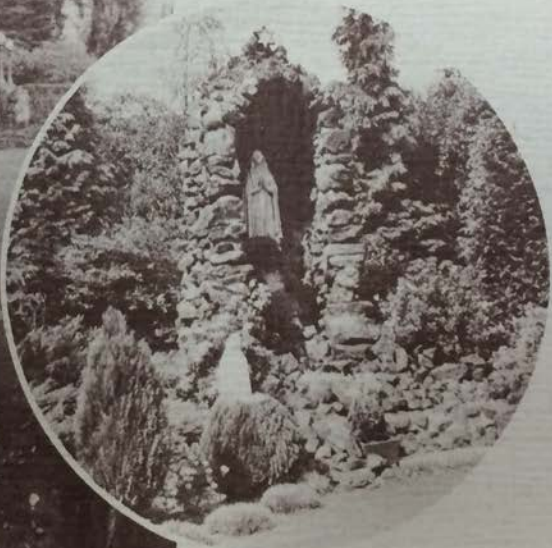
Saint Euphrasia's School..

Better known perhaps, as the House of the Good Shepherd, is a training school for girls who have been removed temporarily from their own homes because of or unwholesome living conditions. The School aims to help the delinquent girls to readjust themselves and thus enable them to assume their responsibilities as good citizens. Soul, mind and body are all the objects of care here, where teaching embraces both precept and example.

The Sisters of the Good Shepherd, who conduct Saint Euphrasia's School, are an order of women with specialized training and a heritage of 300 years in the field of character training. They conduct over 320 similar institutions throughout the world, 10,000 Sisters caring for 75,000 girls. They are able to profit from state subsidies but each school operates financially as an independent unit, adapting to local community needs. The Sisters of the Good Shepherd in Seattle are particularly active in their care as they were incorporated in 1890. They carry on all their work voluntarily assisted by persons trained in their work.

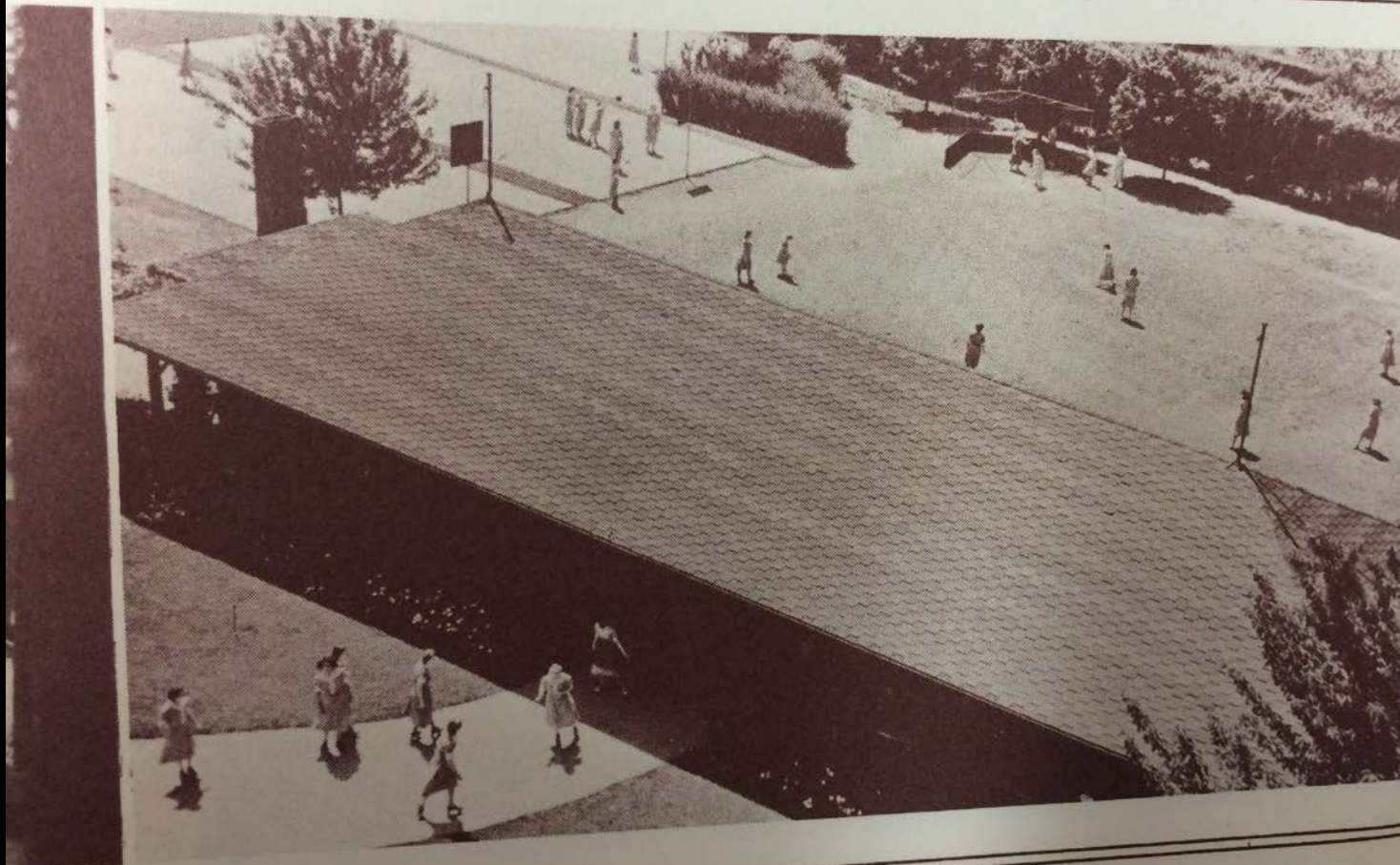
Experience indicates that girls from 14 to 18 profit most from the training at the Schools; however, girls of other ages are accepted if they present problems and need the program of the School. While at the institution, girls of other religious faiths receive the same training and protection. The Schools provide for girls who are sent to them by their parents.

An intensive study is made of each girl's ability and personality is formed through supervised activity together with the stages of a boarding school with all the advantages under the sympathetic supervision of the Sisters of the Good Shepherd.



This booklet is a gift of a friend whose wish is that the work of the Sisters of the Good Shepherd shall be better known and appreciated.

whose sanity



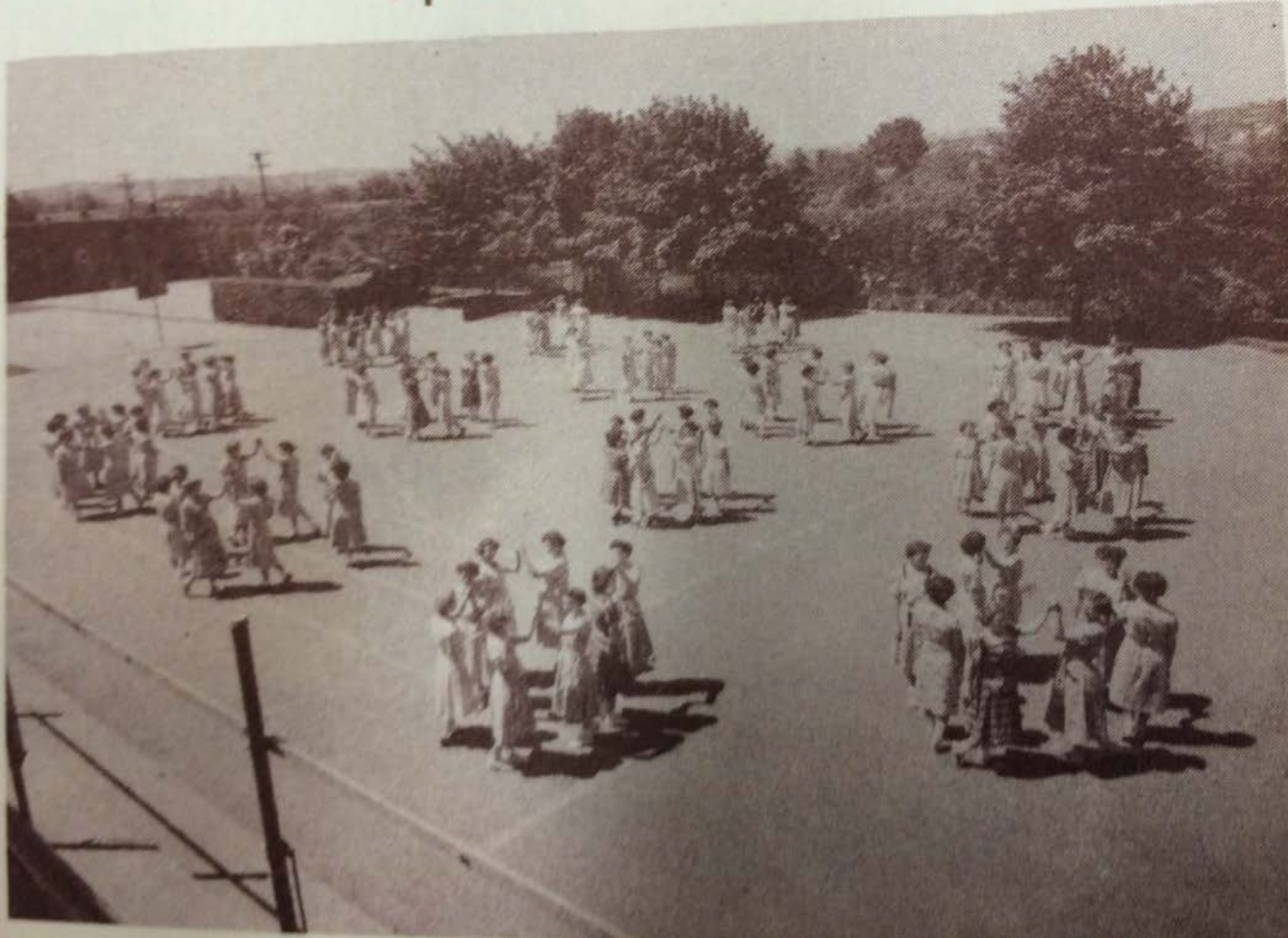
- Photos copied from a 1940 *Jubilate Deo* publication by the Sisters of the Good Shepherd



Where We Play

The School is beautifully situated and the grounds cover ten acres. The grounds are landscaped with artistic shrubbery, orchards and gardens, and an

Square Dancing



Girl's yard

- Photos copied from a 1940 *Jubilate Deo* publication by the Sisters of the Good Shepherd



THE RECREATION HOURS

- Photos copied from a 1940 *Jubilate Deo* publication by the Sisters of the Good Shepherd



1930s – Tennis and Basketball courts

- Archive of the Sisters of the Good Shepherd, Mid-North America Province



Pool shortly after installation in 1959
- Courtesy Archives of Sisters of the Good Shepherd, Mid-North America Province



Pool, installed in 1959

- Courtesy of Archives of Sisters of the Good Shepherd, Mid-North America Province



HOUSE OF THE GOOD SHEPHERD. 8-25-4
SUNNYSIDE AVE. BETWEEN E. 47 ST. + E. 50 ST. L. 8

Pavilion, aka "Paradise"

- 1937 King County Assessor's Record



1957 – Pavilion interior

- Photos courtesy Archive of Sisters of the Good Shepherd, Mid-North America Province

Blessed Mother's Grotto



Built in the late 1930s, the Grotto of Our Lady of Lourdes
- copied from 1940 Golden Jubilee publication



Our Lady of Lourdes Grotto
-Courtesy Archdiocese of Seattle



1919, SE corner orchard block
-Asahel Curtis, UW Special Collections



April 16, 1975
-City of Seattle Municipal Archives



-2018, Historic Seattle photo

Orchard/Farm



Photos: top City of Seattle Municipal Archive 1975, Left to right: Municipal Archives 1978, Carl Woestwin 1978, Paul Dorpat 1978



SW part of the orchard 1975

-City of Seattle Municipal Archives

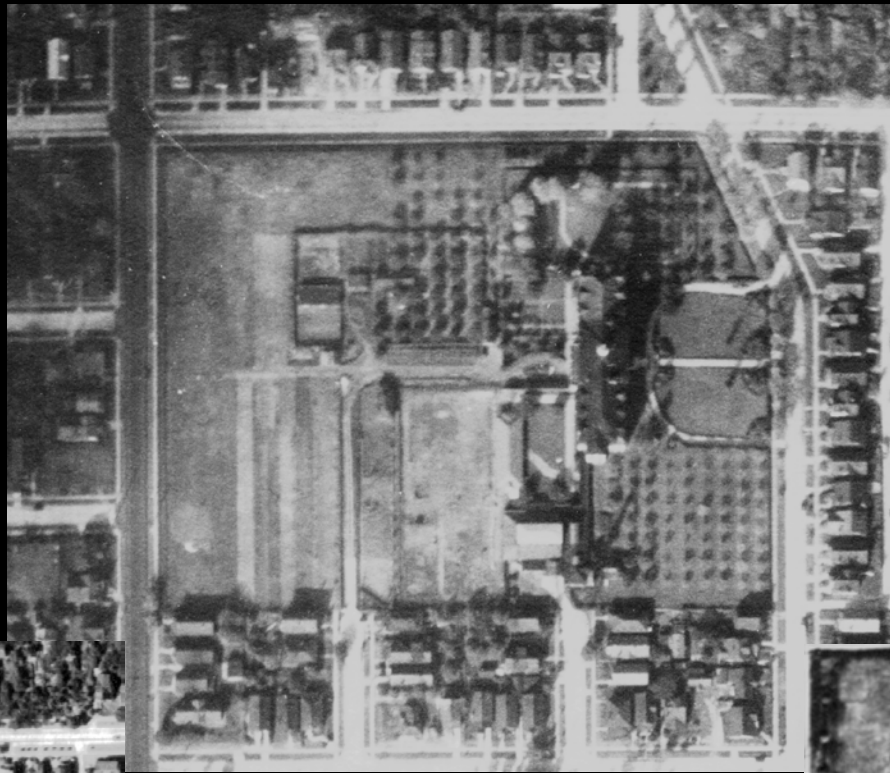


SE orchard with south annex 1975

- City of Seattle Municipal Archives



April 16, 1975
-City of Seattle Municipal Archives



1929



1936



1946

-Pacific Aerial Photos, courtesy of the City of Seattle Engineering Records Vault



West side of building
- 1937 King County Assessor's record

Resources:

HistoryLink.org, <https://www.historylink.org/File/3837>

Harris, Toby. *Home of the Good Shepherd, An Oral History Project*. Historic Seattle and King County Landmarks and Heritage Commission, 2000.

Jubilate Deo. Sisters of Our Lady of Charity of the Good Shepherd. *Seattle, 1940*

Gallagher, Sr Vera, with William F Dodds. *Speaking Out, Fighting Back*. Seattle, Madrona Publishers, 1985.

Annual spring garden tour at the Good Shepherd Center. See event page at historicseattle.org